

Scottish National Show BBR Auction Sat 4 May

Sale @ *The Institute, Bridge of Earn, Perth*, approx. 1pm ALL items NO RESERVE

Floor sales 'cash on the nail'. Buyers commission 15% on the hammer price. Postal bids accepted prior - if emailing please post official BBR Postal bid sheet (*downloadable off BBR website*), along with c.c. details. **MUST** arrive with BBR **no later than Thur 2nd May**. BBR attempts to offer a condition report on some items normal Terms & Conditions Apply - it is essential you make yourself aware of these before bidding, & ascertain condition meets your requirements - email: **sales@onlinebbr.com** tel: **01226 745156**



P1. 'Comrie & Co Helensburgh' pictorial g.b. All white standard shape. Superb 'classic' Scottish pictorial (man holding bottle aloft). Scarce. Very good. (ex Kevin Boyle Collection).

P2. 'Brunswick Black/Glasgow' blacking jar. Strong transfer. An unusually good, undamaged, example - as dug just needs a clean.



P7. 'Todd's Perth Ink' rectangular shape bottle. Heavy, crude, black glass. An early, and rare, offering - a unique shape for the only Scottish named bulk ink? Exc/ A1.

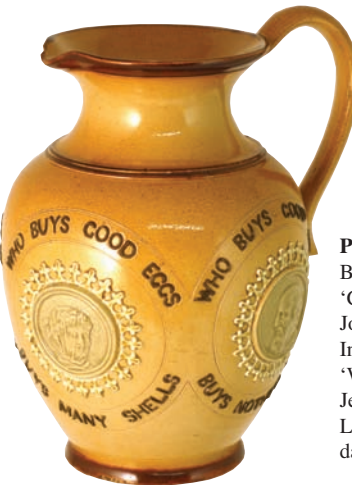
P8. 'Scott & Co/Lockerbie N.B' ginger beer. All white, st. Scarce. Very good.



P3. 'Cooper & Cos' cream pot 'Glasgow, Liverpool & London'. quality. Exc/ A1 - really fine, sharp, transfer quality.



P4. 'The "Midlothian Ideal" bed warmer. All white, black transfer print to front. Hairlined - but a scarce Kitchenalia item - displays OK.



P10. Doulton Motto jug. Tan salt glaze, raised sprigged medallions & lettering. Small rim chip. Early Doulton Lambeth stoneware piece. (Ex John Rowe Collection)



P11. Ginger Beer Group. (2) 'H. C. Baidon & Son Edinburgh' + 'Carmichaels/ Edinburgh' + 'Archibald Johnstons Edinburgh' + 'Hay & Sons Inverurie' + 'W & J Jenkinson Leith'. Some damages. (6)



P5. Pair of 'Warners/ Safe Cure/ London' bottles, 9.5 & 7.5ins tall (pint & half pint). Smaller dark brown, larger mid/ golden amber. Exc/ A1.



P6. 'R. Emmerson Junr/ Newcastle on Tyne', ch, t.t. stonie. The all time 'classic' N. E. pictorial g.b - superb pristine example with a fine, detailed transfer - and stopper. Exc/ A1.



P12. 3 Ginger Beers. 'James Dunbar Edinburgh' (lip chip) + 'Robert Carruthers Dumfries' + 'J. Burns Dumfries'. (3)



P13. 6 Ginger Beers. 'Hay & Sons Inverurie' + 'Skene & Company Dufftown' + 'C. Woolley & Son Edinburgh & Dalkeith' + 'James M. Tod Kirkcaldy' + 'Thomsons Aberdeen' + 'Leitch/ Edinburgh'. Some damages. (6)

P14. 'Cooper & Cos Furniture Polish Glasgow Liverpool & London' bottle. All white black transfer. Exc/ A1.



P20. 'The Greenock Apothecaries Aerated Water Co Ltd Ginger Beer'. All white st. shape. Scarce. Very good. (KB)

P21. Pair of Ointment Pots. Holloways & Egyptian Salve. (2) Very good. (KB)



P15. Dundee large codd bottle. 11.25ins tall, aqua glass embossed 'Nicolls Logie Spout/Giants/ fleuchar Craig/ Dundee'. Unusual giant size. Exc/ A1. (KB)

P16. 'Duneane Creamery' Cream Pot. Milkmaid & cow large pictorial. Good. (KB)



P22. 'John Gray & Co/ Scotch Marmalade Glasgow' preserve jar. Some damage & staining, nevertheless a rare pictorial, early, marmalade. (JR)

P17. Pair John Gosnell Cherry Toothpaste pot lids, black transfer + green & bronze transfer. (2) Very good. (KB)



P23. The Greybeard Whisky jug. Strong/ crisp transfer - great pictorial - 'classic' stoneware whisky jug. Very good. (KB)



P18. Scottish fluid beef 'Vimbus' amber glass bottle. Most unusual - superb colour. Very good. (KB)



P24. Pair of Cream Pots. 'Wigtownshire Creamery Stranraer' brown & black transfer. (2) Very good. (AB)



P19. Glasgow Glass Paperweight. 'William Wilson & Co Lily Bank Boiler Works Glasgow' in red print. Very good. (KB)

BBR stands most every UK Bottle Show & accepts consignments - but **please** make prior contact to discuss space needs: **01226 745156** email: **sales@onlinebbr.com**

P25. 'Genuine Extra Dublin Stout John Noble Berwick upon Tweed', t.t. black transfer. Rarely offered. Exc/ A1





P26. 'F.S. Cleavers Areca Nut Toothpaste' pot lid. An early item! Good.



P27. 'Pure Rich Cream From The Huntly Creamery' cream pot. Milkmaid & cow pict. Very good.



P32. 'Dumfriesshire Dairy Co Finest Fresh Cream Edinburgh and the Creamery Lockerbie' cream pot. Very good - a fine clean example all round.



P33. 'The Simplex Hectograph' jar, white glaze black transfer to front (figure pictorial) & rear. Very good. (KB)



P34. 'The Strathgogie Dairy Huntly' cream pot, crisp blue transfer. Very good. (NL)

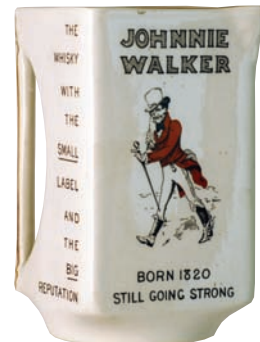


P35. 'Lemon & Co Ginger Beer Dingwall' t.t. st. black transfer. Very good. (KB)



P28. 'Hay & Sons Ginger Beer Inverurie' t.t. ch. sepia transfer. Lip nibbles - good strong transfer colour.

P29. Zara Seal Bottle. Plus 18 sided blue ink pourer plus blue hair restorer bottle. (3)



P36. Johnnie Walker square pub jug (early). James Green & Nephew London p.m. Good. (JR)



P30. 'D. Alexander Ginger Beer Montrose' t.t. ch. swing stopper. Bridge pictorial. Very good. (NL)

P37. 6 ink bottles, 4 blue, aqua & green glass. Octagonal, round, boat shape & square. (6) Good.



P31. Dewars Whisky Doulton jug. Green top lower tan salt glaze. Rim hairline disply really well.



P38. Pair of Cream Pots. 'Pure Rich Cream From The Huntly Creamery'. (2) Very good. (AB)

Postal bids for Perth accepted up to Thursday 2nd May - if emailing please post as well even if going to arrive after the event. All postal bids compete with floor bidders on the day. Any questions email AB or Clare: sales@onlinebbr.com



P39. 'Annandale Dairy Co Dundee & Lockerbie' cream pot, **blue** transfer (clear & strong) all within banner - cow pictorial. Good.

P40. 'John Milne Brewed Ginger Beer Stonehaven' t.t. ch. s.s. **sepia** transfer. Good. (JR)



P46. 'J. Pool/ Grocer & Wine Merchant/ Annan' bottle. All **white, blue** impressed print. Good. (KB)



P47. 'R.J. Fullwood & Blands/ Annato Rennet' flagon. (KB)



P41. Doulton Whisky jug. Raised Galley of Lorne **tan** salt glaze. Very good. (JR)

P42. 'Hendrys Aerated Water Works Abbey St Edinburgh Hop Bitters' ch. all **white, black** transfer. Very good. (KB)



P49. ANTRIM variant 'Wigtownshire Creamery Co/ Ballymoney/ co Antrim' cream pot, black transfer. Good. (CM)



P48. 'Gilbert Rae Special Brewed Ginger Beer Dunfermline' st. green top **black** transfer. No damage - very good. (JR)



P43. 'The Southern Counties Creameries John Melrose Edinburgh' cream pot. Very good. (AB)

P50. 'John Mackay & Cos/ Celebrated Fermented Ginger Beer Glasgow' st, **brown** top, **brown** transfer. Good. (CM)



P44. 'Cruiskeen Lawn' Whisky jug. 'Mitchell Old Irish Whisky/ Belfast'. A very good, clean, example. (KB)



P51. 'Black & White Scotch Whisky' water pub 2 Scottie dogs pictured. Small chip to rim. (JR)



P45. 'Wigtownshire Creamery Co Ballymoney/ Co Antrim' cream pot, **black** transfer. Rare ANTRIM variant. Good. (CM)



P52. 'James Alexander/ Stone Ginger Beer/ Forbes Street/ Aberdeen' t.t., ch. s.s. **blue** transfer. Floral pict. to centre. Good.

NB: A number of items in here have bracketted initials at the end of their description - indicating a 'named' vendor: KB = Kevin Boyle, CM = CHRIS Mortimer, JR = John ?Rowe, AB = Alan Blakeman.



P53. 'William Thomson/ Ginger Beer/ Aberdeen' ch. brown coloured lip, diamond **blue coloured transfer**. Good.



P54. 'Granttown On Spey' stoneware whisky jug, t.t., handle. 'House of Lords...' etc., crown pict. to centre. Unrecorded in 'Whisky Galore' book. Good.



P58. 'Macintyres/ North Berwick' pair g.b.'s - ch, t.t. & a st, t.t. Interesting variant duo. Both 'Gray' p.m. Very good. (2)

P59. 'Clenswell Household Ammonia'. Two variations of the 'classic' (still scarce) t.t., shouldered stoneware ammonias, with original stoppers. Good. (2)



P60. 'J Ferguson/ Glasgow' all white cream pot. Black transfer Caledonian p.m. A rare pot. Very good.

P61. 'Sangs & Co/ Elgin', ch, t.t., swing stopper. Striking (strong & clear) **blue transfer**, large pict. of Elgin Cathedral. Front lip repair. A great rarity, fantastic strong print.



MORE PERTH AUCTION LOTS

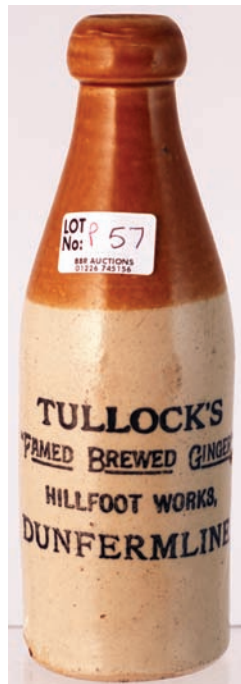
Anyone with suitable extra Perth auction lots contact me prior, or Friday eve/ Saturday am. **ALL** lots will be on view. **ALL** items sold 'as seen' on sale day. 15% + vat - cash on the nail - we bring items to you soon as hammer falls.

P55. 'Globe Bottling/ Dunfermline', t.t. unusual wide necked, wire handled jar. Large transfer to front - lettering all round. Faint side hairline, displays ok.



P56. 'J Wallace/ Midlothian', ch, t.t. blob top g.b. Buchan p.m. Still a scarce g.b. Very good.

P57. 'Tulloch's/ Dunfermline', ch, t.t., blob top g.b. Buchan p.m. Plain - but scarce. Very good.



FUTURE BBR AUCTION ENTRIES

Suitable entries for future BBR Auctions can be delivered to this show tel: 01226 745156, or email: sales@onlinebbr.com - we must ensure we have space to carry goods back!!!

Ditton Bottle Show BBR Auction Sun 19 May

Sale @ Ditton Community Centre, approx. 12 noon **ALL items NO RESERVE**

Floor sales 'cash on the nail'. Buyers commission 15% on the hammer price. Postal bids accepted prior - if emailing please post official BBR Postal bid sheet (*downloadable off BBR website*), along with c.c. details. **MUST arrive with BBR no later than Thur 16th May.** BBR attempts to offer a condition report on some items normal Terms & Conditions Apply - it is essential you make yourself aware of these before bidding, & ascertain condition meets your requirements - email: sales@onlinebbr.com tel: **01226 745156**



D1. 'Warners Safe Cure London' olive green glass. Pint size. A really great colour of the all time classic UK bottle. Very good.



D2. 'Warners Safe Cure London' dark olive green glass. Half pint capacity. Crude, condition very good.



D7. 'Nidderdale/ Creameries/ Strawberry Dale Rd/ Harrogate' cream pot. Cow pictorial, black transfer. A very good, undamaged example.



D8. 'Mrs Ellen Hales Celebrated Heal-all Ointment' black & white pot lid. Great example of a classic UK pictorial ointment pot lid.



D3. 'Emmerson Junr Doctors Stout Newcastle on Tyne' t.t. ch. Classic North East man on penny farthing pict. t.m Very good.



D4. Crescent patent poison bottle, blue glass 3oz capacity. A considerable scarcity still. Very good.



D9. 8 inks. 5 blue glass circular, square ribbed octagonal & 2 square shape pale blue octagonal, pale blue square ribbed & aqua octagonal with pen recess. (8) Good.

D10. Canterbury hot water bottle. Small 'Doultons Improved Foot Warmer/ Lambeth Pottery London'. Front (shoulder) transferred 'Court/ Bros/ Canterbury'. Original stopper. Excellent & scarce regionally named example.



D5. 'Whitbreads Ale & Stout' pub jug. Brown top lower tan saltglaze. Royal Doulton p.m. Very good.



D6. Pair of 'Carricks Cumberland Dairy Co' cream pots one with blue transfer the other a black variant, handled, example. (2) Very good.

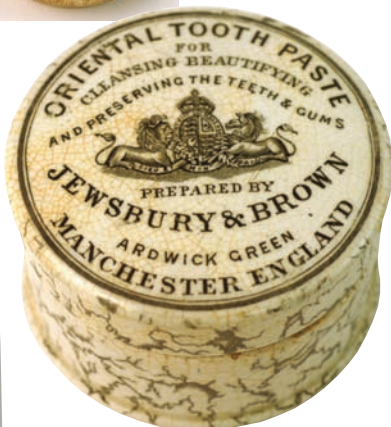


D11. Group of 9 blue (various subtle hues) glass caster oil bottles. A fine, varied, selection. (9) Overall condition good.

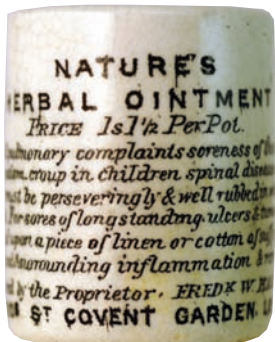


D12. 2 pot lids 'S. Maw Son & Sons Cherry Toothpaste' plus 'Calverts Carbolic toothpaste'. (2) Good.

D13. 'Jewsbury & Brown Oriental Toothpaste' pot lid & base. Large central coat of arms pict. All featuring the 'famous' classic mottled outer lid edge & base. Very good.



D14. 'Natures Herbal Ointment' heavy ceramic ointment pot. Overall good.



D15. 'W. Atkinson & Sons/ Castle Bottling Stores/ Church street/ Helmsley' t.t. ch. Castle pictorial. Buchan p.m. Classic, scarce, North Yorkshire pictorial. Very good.



D16. Bass in Bottle Matchstriker. Royal Doulton p.m. Base hairlines.



D17. Pair of 'Warners Safe Cure London' light & slightly darker amber coloured glass. One pint, the other half pint size. Both good. (2)



D18. 'Natures Herbal Ointment', cylinder shaped ointment pot. with lots of writing! All good.

D19. 8 inks. 6 blue glass. (2) square ribbed, (2) circular, (2) square shape plus green octagonal & circular. (8) Mostly very good.



D20. 8 pink bisque dolls heads one with glass eyes intact. (8)

D21. Large quantity of doll parts, china head & shoulder types, arms & legs, clay pipes etc.



D22. Mixed group of china pieces, lead soldiers etc - a real diggers pot pourri?



D23. 'Johnnie Walker Born 1820 Still Going Strong' square shape pub jug. James Gree & Nephew p.m.

D24. 'Johnnie Walker/ Born 1820/ Still Going Strong' square shape pub jug. James Green & Nephew p.m. Small pouring lip chip.

D25. Two Holloways Ointment Pots plus 2 'Singleton Eye Ointment' pots (4). All good.





D26. Pratt coloured pot lid & base 'Shakespeares Birth Place'. Good.

D27. Pratt coloured pot lid & base 'Dutch Winter Scene'. Good.



D28. Pratt coloured pot lid 'Dangerous Skating'. Good.

D29. 'John Hare Henlow Beds' flour sacks, brown transfer - a quantity.



D30. Cream Pot. Brown top, brown transfer 'Thick Rich Cream/ Ideal Dairy Co/ 222 Kensal Road London W.' Good.



D31. 'R. Emmerson Junr Doctors Stout Newcastle on Tyne' ch. t.t. Classic North East man on penny farthing pict. t.m black transfer. Buchan p.m. Good.



D32. Dronsfield Bros Ltd oblong glass paperweight 'Dronsfields/ Sample Card/ Atlas Brand/ Emery Filleting/ Dronsfield Bros Ltd'. Good.

D33. Group of cobalt blue glass bottles. Hexagonal poisons & 'Dr Cassells Instant Relief' plus 'Chalybeate Waters' etc. (12) Good.



D34. 12 inks. 6 blue glass square & round, octagonal, bell shape, boat shape & square ribbed etc. (12) Good.

D35. Poisons group. Cobalt blue & green cut off back hexagonals. (8) Good.



D37. 'John Hare's, Stone ground, Self-Raising, Flour, Henlow, Beds' flour bags, red transfer. (30)

D36. 'John Hare, Henlow Beds, Diastase Flour' branded flour bags, red triangle & writing. (30)



D38. White Horse Whisky water jug. Snake skin effect blue mottled body with a white area plaque each side depicting the horse t.m., writing, & Royal coat of arms. Shelley p.m. to base. Some silver rim wear, otherwise very good/ undamaged.



D39. Auld Lang Syne whisky jug. Lrg size, neck & handle tan. Strong/ crisp black transfer of 3 seated card players in pub - diamond reg. to bottom. Very good. (JR)



D43. Towcester g.b. Ch, t.t. 'Walker & Soames/ Towcester' around outside of pict. building image 'The Watting Well'. Price p.m. Inner lip flake otherwise good.



D44. Folkstone & Dover g.b. Ch, t.t. Strong black transfer 'T Cook & Son/ Folkestone & Dover' large pict t.m. to centre of foaming glass. 'Fulham Pottery' transferred toward base. Couple of tiny pin prick flakes otherwise good - excellent transfer. (NL)



D40. Auld Lang Syne whisky jug. Sml size example of above (both imp. Kennedy p.m. to base). Very good. (JR)

D41. True Daffy's Elixir. Aqua glass 'classic' early English medicine, rectangular body with faceted corners. Each panel heavily & clearly embossed. Thick/ square lip finish. Very good indeed. (KB)

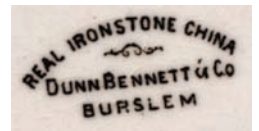


D45. Brighton Caviare Pot. Overall cream coloured outer patent screw thread type jar transferred across front. 'St Petersburb Caviare Co/ .../ 85 East Street, Brighton'. Elaborate coat of arms, Prince of Wales feathers & floral bunch to rear. Doulton imp. base mark. Bottom edge chip. (JR)



D46. Brighton soap dish. Oval pottery dish with large outer blue transferred border. Elaborate black centre transfer 'Mutton/ Confectioner/ Brighton/ 1844' with decorative outer border & crown above. 'Dunn Bennett/ Burslem' base marks. Very good - nay superb! (JR)

D42. 'Gell's/ Dalby's/ Carminative'. Tapering aqua conical glass with fine rolled lip. Not pontilled but clearly an early piece. A little internal dirt (easy to clean) but no damage, very good. (KB)



ALL lots will on view at BBR prior, plus at the show. **ALL** items sold 'as seen' on sale day.
15% + vat - cash on the nail
- we bring items to you soon as hammer falls.

D47. Dover Doulton Motto Mug. Green topped, lower salt glaze, handled stoneware motto mug. 'Come Landlord.../ .../ Tomorrow... for Dover'. Interesting Doulton base marks. Very good. (JR)

BBR stands most every UK Bottle Show & accepts consignments - but **please** make prior contact to discuss space needs: **01226 745156**
email: **sales@onlinebbr.com**



D48. Raob Pipe Bowl.
Complete figural bulls head pipe bowl, impressed both sides 'RAOB'. Very good. (JR)

D48A. Elaborate eagles claw holding pipe bowl. Great detail. Minor flake - overall very clean & good condition.



D49. Delightful figural pipe bowl featuring a stylish period bonnetted lady - feather atop! Some patination otherwise good.

D50. Hardens Star fire grenade, **cobalt blue**. Spherical bodied grenade with raised vertical ribs all round body. Embossed around central 'ring' and 'STAR' in front star panel. Extremely good.



D51. Group of 3, aqua glass, heavily embossed pepper sauces. One sheared lip. Early items. Good. (3)

D52. Trio of small size poisons - square bodied amber glass, triangular blue, square wide mouthed blue. All very good. Rarely seen. (3)



D54. All time 'classic' COLOURED variant of the above John Gosnell tooth paste pot lid - this being **delightful shades of green**, complete with original gold band. Again undamaged - exc/ A1.



D53. All time 'classic' black & white 'JOHN GOSNELL/ CHERRY TOOTH PASTE' pot lid. Black transfer on white. No damage at all - exc/ A1.



D55. 'Firth's Darlington ginger beer. Striking **blue transfer** featuring a pict. steam locomotive, and coal wagon. Gray p.m. Exc/ A1

D56. BRIGHTON pot lid. Striking, strong, green transfer 'T Mussell/ Chemist/ North St/ Brighton.' Outer rim wording 'PATRONISED BY EMINENT/ PHYSICIAN & DENTIST.' A superb South coast regional ultra scarce regional lid. Exc/ A1



Postal bids for Ditton accepted up to Thursday 16nd May - if emailing please **post as well** even if going to arrive after the event. All postal bids compete with floor bidders on the day. Any questions email AB or Clare: sales@onlinebbr.com

Bowburn Bottle Show BBR Auction, Sat. 8 June

Sale @ Bowburn Community Centre, approx. 12 noon **ALL items NO RESERVE**

Floor sales 'cash on the nail'. Buyers commission 15% on the hammer price. Postal bids accepted prior - if emailing please post official BBR Postal bid sheet ([downloadable off BBR website](#)), along with c.c. details. **MUST** arrive with BBR **no later than Thur 6th June**. BBR attempts to offer a condition report on some items normal Terms & Conditions Apply - it is essential you make yourself aware of these before bidding, & ascertain condition meets your requirements - email: sales@onlinebbr.com tel: **01226 745156**



B1. 'Blyth Fruit Cream Co/ A.I Fermented/ Ginger Beer/ Blyth' t.t. ch. Good. (KB)



B2. Durham Cold ream Pot Lid. 'Glycerine & Rose Cold Cream/ Prepared By/ William Sarsfield/ Pharmaceutical Chemist/ 7 Market Place Durham'. Very good. (KB)



B6. 2 Newcastle Spirit Flasks. Aqua glass 'Newcastle Empire Palace Limited' & 'Robert Emmerson Junr'. (2) Good. (KB)



B7. 'Nothern Wine Traders Ltd/ Newcastle on Tyne' impressed flagon. Buchan p.m. (KB)

B3. West Hartlepool impressed g.b. 'R.H. Barker/ North Eastern Hotel/ West Hartlepool' t.t. ch. Very good. (KB)



B8. 'R. Fenwick & Co The Brewery Sunderland' pewter coffee pot. Good. (KB)



B4. 'Wm Robson/ Sunderland' & 'Thomas Forster Blyth' pair of acid etched black glass beers. (2) Good. (KB)



B5. 'G. Caldcleugh/ Durham/ 1860' early grey/ green impressed porter. Good. (KB)



B9. 'Jas McKie & Son/ Ginger Beer/ Newcastle' t.t. ch. (KB)



B10. 'J. Kershaw & Sons/ Gateshead & Leadgate' blue glass acid etched soda syphon with large bird on branch pictorial. Good. (KB)

MORE of the huge **Kevin Boyle Collection** to be included in BBR's 2 remaining 2013 cat' auctions on July 7th & October 5 & 6th Printed catalogues - £24 postally (UK) for a run of 4: ch. or paypal to BBR



B11. Blue glass hamilton bottle unembossed. Some surface dullness, marks etc. (KB)



B12. 2 Sunderland Spirit Flasks. Aqua glass embossed 'W. Waddle/ Wine & Spirit Merchant/ Sunderland' & 'J. Chrisp/ 191/ High Street/ Sunderland'. (2) Good. (KB)



B17. 'Cherry Toothpaste/ Prepared By/ W. Owen & Son/ Chemists 131 Barras Bridge/ Newcastle on Tyne' black & white pot lid. Very good. (KB)



B16. 'T. Armstrong/ Blackhall Mill' locomotive pictorial black glass beer. Very good. (KB)



B13. 'R. Emmerson Junr/ Doctors Stout/ Newcastle on Tyne' - variant pair of the all time 'classic' North East t.t. ch. (2) Good condition - one needs a good clean.



B18. Pair of pictorial aqua glass codd bottles: 'W. H. Wood Durham' & 'Watson Beckwith & Wilkinson/ Spenny Moor'. (2) Good. (KB)



B14. 'Albert Costin/ Allonby' early grey/ green slip glaze impressed porter. Very good. (KB)



B15. 2 aqua Jarrow Spirit Flasks. 'Royal Hotel/ Spirit Vaults Market Square/ Jarrow' & 'Station Hotel/ Jarrow on Tyne'. (2) Good. (KB)



B20. 'Bucktrout & Co/ Thomas Elliot/ Guernsey' impressed flagon. Doulton Lambeth p.m. (KB)

B19. 'Duncan & Daghish Ltd/ Dublin Stout/ Newcastle-on-Tyne' t.t. ch. Entwined initials t.m. to centre. Buchan p.m. Base chips.



B21. 'Stockton-on-Tees/ Grahams/ White Cherry/ Tooth Paste'. **Black & white** transferred pot lid. Good. (KB)



B22. 'James Keiller & Sons Dundee Marmalade' large, medium & miniature jars. (KB)



B23. 'R. Powley & Sons/ Stone/ Ginger Beer/ Sunderland and Willington' t.t. ch. Buchan p.m. Good.



B24. 'Nathan Elsdon/ Delves Lane/ Consett' bird pictorial black glass beer. Good. (KB)



B25. 'Jackson/ Fenham/ Newcastle on Tyne' blue glass acid etched soda syphon featuring a large full figure pictorial. Good. (KB)



B26. 'R. Hart/ 29 Middlegate/ Hartlepool' slab seal flagon. Very good. (KB)



B27. 8 Inks. (4) blue glass square, octagonal & 2 circular plus pale blue square ribbed & green square ribbed, green boat shape & aqua octagonal. (8) Good.



B28. 7 pink Bisque dolls heads (2) with glass eyes intact.

B29. 'W. H. Wood Durham' amber glass screw top beer. Large Durham Cathedral pictorial t.m. Sooooooerpb! (KB)



B30. 'Dowson Bros/ Gateshead' & 'Sam'l Vincent Hop Bitters/ Newcastle & Howdon' pair ch. all white stonies. (2) Good. (KB)

ALL these Bowburn auction lots will on view at BBR prior, plus at the show itself. **ALL** items sold 'as seen' on sale day. 15% + vat - cash on the nail - we bring items to you soon as hammer falls.

BBR stands most every UK Bottle Show & accepts consignments - but **please** make prior contact to discuss space requirements: 01226 745156 email: sales@onlinebbr.com



B31. 'G.P. Fairman/ The Pharmacy/ Borough Road/ Sunderland' **black & white** pot lid. Regional rarity. Good.



B32. 'G.A. Barrasford/ Special Dublin Stout/ Jarrow' ch. t.t. **black** transfer. Buchan p.m. Very good. (KB)



B37. Middleton Preserve jar with paper label 'C.W.S. Raspberry/ Jam/ Middleton'. Good. (KB)



B38. W. H. Wood Durham. Aqua glass codd bottle **plus** 'sister' ginger beer bottle - both with large Durham Cathedral pictorial t.m. Ch. t.t. Buchan p.m. (2) Good.



B33. 'Wm Hindmarsh/ Fenceshouses'. Rearing lion pictorial t.b. Impressive, scarce, black glass beer. Very good.



B34. Pair of Spirit Flasks. 'Victoria/ Jubilee Flask/ 1887' & 'J. Chris & Son/ Wine & Spirit Merchants/ Sunderland'. (2) Good.

B35. Newcastle on Tyne Teapot. **White** glaze, **black** transfer both sides. Shop premises pictured '5 Nun St 34 Clayton St/ Newcastle o Tyne & 45 Ormonde St Jarrow'. Some crazing & staining. (KB)



B40. Pair of Sunderland Stout Bottles. 'James Deuchar Limited Dublin XXX Stout Sunderland' & 'Wm Jackson/ Wine & Spirit Merchant/ Sunderland' t.t. ch. **black** transfer. (2) Good.

B39. 'Alnwick Brewery Co Ltd' clear glass acid etched soda syphon. Good. (KB)



Postal bids for **Ditton** accepted up to **Thursday 6th June** - if emailing please **post as well** even if going to arrive after the event. All postal bids compete with floor bidders on the day. Any questions email AB or Clare: sales@onlinebbr.com



B41. 'John Burton Stone Nector Ginger/ Minerla Water Works/ Amble' t.t. ch. **black** transfer. Gray Portobello p.m. Good. (KB)



B42. 'T. Armstrong/ Black Hall Hill' (2) black glass beers Locomotive pictorial t.m. One internal screw type. (2) Good. (KB)



B43. 'John Muter/ Stone/ Ginger Beer/ Bedlington Station' t.t. ch. **black** transfer. Buchan p.m. Good. (KB)

B44. 'G. Caldcleugh/ Durham/ 1852' grey/ green glaze. Early dated impressed porter. Rare small size. Good. (KB)



B45. Durham impressed grey/ green slip glazed porter, lrg size. Unusual low down impressed lettering 'CALDECEUGH'S/ BARCLAY PERKIN/ & CO'. Minute, insignificant flakes, otherwise exc. (KB)



B46. NEWCASTLE amber seltzer 'W B REID & CO LD, buckled belt pictorial. Very good.



B47. 'WIGHTMAN/ NEWCASTLE minerals duo, aqua - lrg size codd & hamilton with impressive heavily embossed castle pictorial. Good. (2)



B48. HOLLIDAY & CO/ NORTH SHIELDS **vivid amber/ light brown** shouldered beer, rearing winged horse pictorial. Very good.



B49. EB CHESTER ch. t.t. g.b. - pict. of steam loco with coal wagon in tow. 'T ARMSTRONG & SON. DUBLIN STOUT'. Very good.



B50. 'John Procter & Co/ Grocers &/ provision Merchants Morpeth' impressed flagon. Very good.



B51. 'WARNER SAFE CURE LONDON' olive green glass 1/2 pint size. Very good.



B52. R J THURLOW pr t.t. ch. stouts. Large & small size, entwined initials to transfer centre, bottle with rear transfer. Buchan p.m. Very good. (2) (KB)



B56. 'M REAY/ STONE/ GINGER/ BENWELL' ch, t.t., swing stopper. Pict. t.m. of hand holding bottle. Very good. (KB)



B57. 'J MADDISON/ GATESHEAD' swan pict. green glass shouldered beer. Very good. (KB)

B53. NORTH EAST BREWERIES SUNDERLAND, ch. glass beers - mid red amber (nice swirls in the neck) & aqua. Lrg brewery dray pict. Very good. (2) (KB)



B54. HODGSON & DOWNS/ STOCKTON & MIDDLEBORO ch. t.t., g.b. Buchan p.m. Very good. (KB)



B55. THOMAS ARKLE/ MORPETH sml aqua glass Chapman patent. To base 'CHAPMAN & SON/ BIRKENHEAD'. Slightly cloudy.(KB)

B58. 'T ARMSTRONG/ BLACK HALL MILL', pr black glass beers steaming train pict. One acid etched one embossed. Good. (2) (KB)



pictorial, **puce** coloured acid etched seltzer. Overall surface dullness. (KB)



B59. 'THOS CLARK/ NEWCASTLE/ BRIGHTON SELTZER' hunting horn

B60. 'AH HIGGINBOTTOM & CO/ CLUB BLEND/ WHISKY/ NEWCASTLE/ ON TYNE', ch, t.t. highly detailed/ ornate transferred stonie. Side touch mark & miniscule lip nibbles - none of which detract. (NL)



BBR's next major auction will be **July 6 & 7** alongside the **HUGE UK SummerNational** w/e event 40,000 sq ft of stalls both days, Car Boot Sunday (not your usual Car Boot!), Competitions, **MAJOR** display & a whole myriad of activities to keep you well & truly happy!
THE one not to miss

Terms & Conditions of sale

As much care as is practicably possible is given to descriptions. However many items are of an age or nature precluding their being in pristine condition. We give serious consideration to any concerns brought to our attention but reserve the right to disagree. Any additional information is generally mentioned before bidding begins but it is often not possible to contact absentee bidders at this point. We are always happy to answer questions before a sale (see box) but it is your responsibility to reassure yourself before purchase. Generally we will indicate our judgement of the lots quality and condition, giving due consideration to its age and rarity. For guidance purposes only the following terms are used to give a feel of this judgement.

Good: We judge it to be a good example, displays well, minus overtly unsightly damage. An item that is not pristine with signs of use & age. This might include scratches, tears or surface faults.

Very Good: The item displays only minor evidence of wear, apparent on close inspection. This may include inconsequential chips or flaws, some corrosion to metal parts, or minor damage in unseen area (*ie base or rear*).

Excellent/ A1: An item as near to possible pristine, taking into account its age. A bottle might for instance have base wear but full body sheen and strong embossing with no chips or cracks. Any time of manufacture flaws or patina of age in this instance would be deemed either part of the character, or not detracting.

IN SHORT

Many items are of an age/ nature precluding their being in pristine condition. Some catalogue descriptions may refer to damage/ & or restoration. Omission of such does not imply a lot is free from defects, nor does any reference to a particular defect imply the absence of others.

IMPORTANT

No statement in this catalogue shall be deemed a warranty, representation or assumption

of liability in respect of date, size, condition, quality, importance or provenance. The ultimate judge, and therefore onus, is with the buyer.

BIDDING

The highest bidder is deemed the purchaser. Advances on each lot determined by the Auctioneer.

BIDDING FOR SOMEONE ELSE?

If you intend to purchase items for another person it is important you obtain a SEPARATE bidding number.

POSTAL BIDDING

Performed on behalf of absent buyers trying to buy items as cheaply as possible competing with other bids. No charge for this.

POSTAL BID SHEETS

Tied bids - first to arrive secures - this can result in bidding the same price as someone else but **NOT** securing. It is in your best interest to return forms soon as possible. **If you tel or fax bids through you MUST ALSO post off the bidding form, even though it may arrive after the sale.**

EVERYTHING OFFERED WITH NO RESERVE

PAYMENT

Tel/ postal/ fax & floor bids are a strictly legally binding contract. Purchases must be paid for before taken away. Cheques to BBR Auctions. **Overdue accounts charged 3% after 21 days.**

CREDIT CARD PAYMENTS

Not available on sale day as away from BBR office. Postal successes conducted upon return..

POSTAGE

Postal purchasers **MUST** advise how they wish items sending. Full p & p costs borne by purchaser. Following a sale we pack, weigh, & invoice for total amount, inc. p & p.

POSTAL BUYERS

Packing & weighing can take one working week to complete - **please remain patient.**

BBR PACKING

Generally our costs are much less than half competitors - such as Mailbox etc. We try to keep costs low: packing time & materials used. We have extensive experience with all manner of shapes, sizes, & fragility, which may require special boxes! Very bulky or heavy items we suggest carriers rather than Parcel Force. If you have a preferential carrier **please advise when forwarding bids.**

INSURANCE

BBR can insure goods in transit **IF REQUESTED**. **UK PO rates:** 75p up to £150 goods value, £1.35 up to £500 value. **NOT** done unless specifically requested **at time of bidding**. **The PO does not insure for pottery or glass - only consequential loss**

OVERSEAS PURCHASERS

Insuring goods requires declaration of **FULL** value. You decide disadvantages/ advantages regarding customs - & advise - on bidding sheet.

AGENTS In all cases BBR act only as agents between Vendor & Purchaser.

COMMISSION 15% buyers premium on hammer plus VAT.

PRICES REALISED: Downloadable off BBR website: onlinebbr.com as a pdf, OR leave a stamped addressed envelope, OR pick one up from a show, OR included at the back of the October catalogue.

HELP US TO HELP YOU! If you spot damage or condition differences we have not **PLEASE INFORM US!**

before bidding by post, or at the sale, it is important to read & fully understand Terms & Conditions

www.onlinebbr.com

BIDDING INCREMENTS

UP TO £50 rising in bids of £2, £5, £7, £10 etc.

After £50 bids rise in £5 steps. **After £100** bids rise by

£10. **After £200** bids rise by £20, £50, £70. **After £500**

bids rise in £50 steps. **After £1,000** bids rise in £100 steps

Toward conclusion rises at auctioneers discretion.

Want additional information about any lot?

BBR attempts to help postal bidders buy with ease, & confidence. Catalogueing errors/ descriptions can occur which may not provide the fullest & most accurate information needed for absentee bidding.

The last thing we want is anyone to receive something not what they thought. We therefore ask you to tel. for a more specific condition report

We suggest you tel., leave lot numbers interested in, call back 5 mins later, when items will be by the phone.

